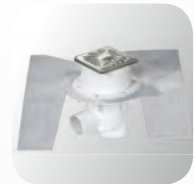
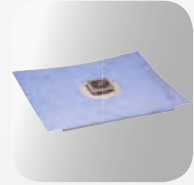


FLOOR DRAINS AND SHOWER CHANNELS



All our documents can be downloaded free of charge from: www.nicoll.fr

THE RANGE OF WALK-IN SHOWER DRAINAGE SYSTEMS

Nicoll knows that every project is different and that the method of installation will vary. We can offer you an appropriate solution for your project: shower channels, ready-to-tile shower boards, floor drains for tiled or vinyl floors.

SHOWER DRAINAGE SYSTEM	THE TECHNICAL CONSTRAINTS OF YOUR PROJECT							
	PRODUCT IMAGE	FLOW RATE	SPACE REQUIRED	SEALING SYSTEM	TYPE OF CONNECTION	DIAMETER OF CONNECTION	EASE OF INSTALLATION	PRICE
Shower channel (width 50 mm)				On screed	Horizontal	Ø 40 mm	+++	€ € €
Low-height channel				On screed	Horizontal	Ø 40 mm	+++	€ € €
Stainless steel shower channel (width 70 mm)				On screed	Horizontal	Ø 40/50 mm	+++	€ € €
Floorline shower channel				On screed	Horizontal	Ø 40/50 mm	++	€ €
Stainless steel shower channel with ready-to-tile shower board (width 70 mm)				On shower board	Horizontal	Ø 40/50 mm	++	€ € €
Turbosol floor drains with ready-to-tile shower board				On shower board	Horizontal or vertical	Ø 40/50 mm	++	€ € €
SICA floor drains with ready-to-tile shower board				On shower board	Horizontal or vertical	Ø 50 mm or Ø 50/63mm	++	€ € €
SICA floor drains for tiled flooring				On and under screed	Horizontal or vertical	Ø 50 mm or Ø 50/63mm	+++	€ €
Turbosol floor drains with PVC film				Under screed	Horizontal	Ø 40/50 mm	++	€ €
Shower corner drain				On screed	Horizontal	Ø 40 mm	+++	€ €
Floor drains Floor line				On and under screed	Horizontal or vertical	Ø 40/50 mm	+++	€ €
SITAR floor drains for vinyl floors				On screed	Horizontal or vertical	Ø 50 mm or Ø 50/63mm	+++	€ €
Shallow trapped channels with floor gully				Without	Vertical	Ø 40/50 mm or Ø 93mm	+++	€
Floor drains				Without	Horizontal (with adaptor) or vertical	Ø 50/40 mm or Ø 50/40/93 mm	++++	€



YOUR TYPE OF APPLICATION

TILED FLOOR				PVC FLOOR			Pages
INDIVIDUAL SHOWERS	HOTELS SPAS	COMMUNAL SHOWERS	UTILITY AREAS	HOSPITALS	CLINICS	RETIREMENT HOMES	
							p.84
							p.84
							p.86
							p.88
							p.90
							p.91
							p.93
							p.95
							P.97
							p.96
							p.97
							p.98
							p.89
							p.99



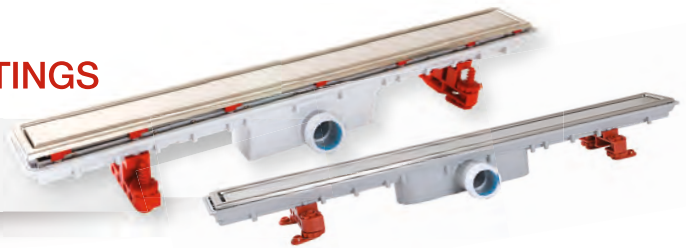
SHOWER CHANNELS

DOCIA® CHANNELS: THE AESTHETIC SOLUTION FOR WALK-IN SHOWERS

The DOCIA® range offers a multitude of innovative, reliable aesthetic solutions to meet the style and technical requirements of all your bathroom projects.

CHANNELS WITH 50 MM WIDE GRATINGS

- channel lengths available (40-70-80-90-100 cm)
- 7 models of gratings



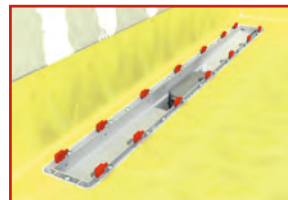
STAINLESS STEEL CHANNEL BODIES WITH 70 MM WIDE GRATING

- 5 channel lengths available (70-80-90-100-120 cm)
- 8 models of grating



TO BE FIXED TO THE WALL WITHOUT UNSIGHTLY CUTTING:

- reduced-width plate
- adjustable feet



POSITION HEIGHT ADJUSTMENT (6/8/10/12/16 mm):

- from mosaics to large tiles.



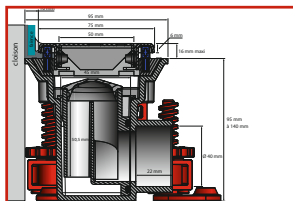
NO COMPROMISE ON SEAL PERFORMANCE:

- reliability of the solvent welding in concrete
- clamping flange for the sealing membrane.



HIGH DRAINAGE FLOW RATE:

- 0,44 l/sec for the low height channel
- 0,66 l/sec for the original channel



ODOUR TIGHTNESS SYSTEM:

- 50 mm water seal for the original channel
- 30 mm water seal + odour tightness system for the low-height channel



HYGIENIC AND EASY TO CLEAN:

- built-in slope to prevent stagnant water formation
- trap can be extracted for cleaning.

LOW-HEIGHT SHOWER CHANNEL LENGTH 40 CM / DRAIN FOR CORNER

Sanitary

NEW



Nicoll innovates and increases its range of floor drains and channels for walk-in shower drainage systems with new technical and aesthetic solutions.

LOW HEIGHT SHOWER CHANNEL:

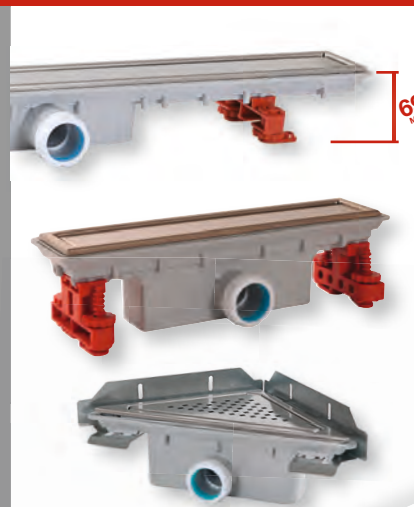
- ▶ Only 69 mm high
- ▶ System anti-ascent of smells: 30 mm water seal with anti-desiphonnage trap
- ▶ Flow of 0,44L/s

CHANNEL 40 cm LENGTH:

- ▶ Design solution

DRAIN FOR CORNER :

- ▶ Discreet and original solution with a drainage in corner
- ▶ Wall fixation



SANITARY

SANITARY

GLUE

RAINGUTTERS

ROOFING
ACCESSORIES

FASCIA AND
ROOFING SOFFIT
BOARDS

BUILDING

ACCES
TRAP DOOR

VENTILATION

SURFACE DRAINAGE
PRODUCTS

HYDRAULIC
DRAINAGE CHANNELS

ENVIRONMENT

HYDRAULIC
DRAINAGE CHANNELS

SAUL

DRAINAGE FITTINGS

FLOOR DRAINS AND SHOWER CHANNELS

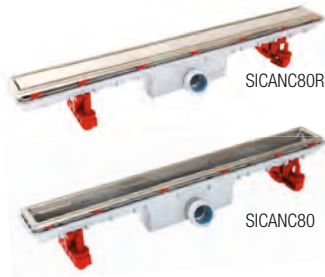
Shower channels **DOCIA** SYSTEMS

	LENGTH (mm)			WIDTH (mm)			WIDTH (mm) Mini shower	REF.	Packing	Packaging
	Body	Frame	Grating	Body	Frame	Grating				

COMPLETE CHANNELS WITH 50 MM WIDE REVERSIBLE MODEL GRATING

50 mm water seal - 0.66 litres/second flow rate - Solvent weld Ø 40 mm socketoutlet or to screw

Supplied with body, flange, screws, studs to adjust height of frame and grating, adjustment feet, trap, frame and 304 stainless steel reversible model grating for the full model.



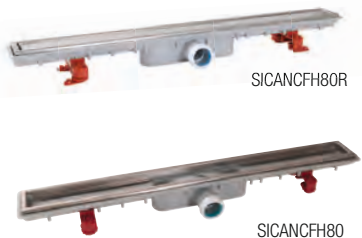
790	770	745	95	75	47	800	SICANC80R	B1		
CHANNEL BODY WITHOUT GRATING										
390	370		95	75			SICANC40	B1		
690	670		95	75		700	SICANC70	B1		
790	770		95	75		800	SICANC80	B1		
890	870		95	75		900	SICANC90	B1		
990	970		95	75		1000	SICANC100	B1		

Low-height shower channels **DOCIA** SYSTEMS

	LENGTH (mm)			WIDTH (mm)			WIDTH (mm) Mini shower	REF.	Packing	Packaging
	Body	Frame	Grating	Body	Frame	Grating				

COMPLETE CHANNELS WITH 50 MM WIDE REVERSIBLE GRATING

30 mm water seal + check valve - 0,44 litres/second flow rate - Solvent weld Ø 40 mm socketoutlet or to screw. Supplied with body, flange, screws, studs to adjust height of frame and grating, trap, frame and 304 stainless steel reversible grating for the full model.

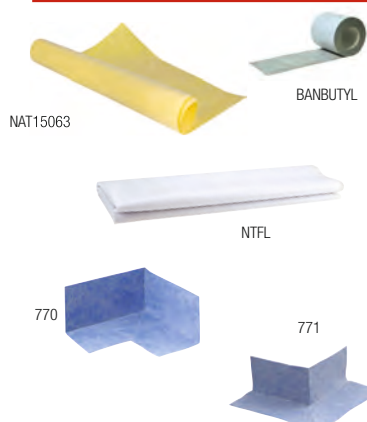


790	770	745	95	75	47	800	SICANCFH80R	B1		
CHANNEL BODY WITHOUT GRATING										
690	670		95	75		700	SICANCFH70	B1		
790	770		95	75		800	SICANCFH80	B1		
890	870		95	75		900	SICANCFH90	B1		
990	970		95	75		1000	SICANCFH100	B1		

Sealing accessories

	LENGTH (mm)	WIDTH (mm)	DESCRIPTION	REF.	Packing	Packaging
--	-------------	------------	-------------	------	---------	-----------

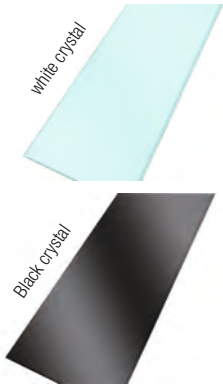
SEALING



	1500	630	Waterproofing membrane	NAT15063		S1
	10 000	150	Self-adhesive butyl sealant tape	BANBUTYL	F1	
	1800	1500	NTFL , non-woven waterproofing membrane, water-repellent, ready-to-tile.	0411703	S1	
Moulded ready-to-bond corner seals						
			770 , internal corner	0411587	S1	
			771 , external corner	0411588	S1	

	LENGTH (mm)	WIDTH (mm)	COMPATIBILITY	WIDTH (mm) Mini shower	REF.	Packing	Packaging
CRYSTAL GRATINGS, WIDTH 50 MM							

The stainless steel frame surrounding the grating is supplied with the channel body.



645	47	Grating for SICANC70	700	GSICAN70BL	B1		
745	47	Grating for SICANC80	800	GSICAN80BL	B1		
845	47	Grating for SICANC90	900	GSICAN90BL	B1		
945	47	Grating for SICANC100	1000	GSICAN100BL	B1		
645	47	Grating for SICANC70	700	GSICAN70NO	B1		
745	47	Grating for SICANC80	800	GSICAN80NO	B1		
845	47	Grating for SICANC90	900	GSICAN90NO	B1		
945	47	Grating for SICANC100	1000	GSICAN100NO	B1		

50 MM WIDE TYPE 304 STAINLESS STEEL GRATINGS, WIDTH 50 MM							
--	--	--	--	--	--	--	--

The stainless steel frame surrounding the grating is supplied with the channel body.



345	47	Grating for SICANC40		GSICAN40R	B1		
645	47	Grating for SICANC70	700	GSICAN70R	B1		
745	47	Grating for SICANC80	800	GSICAN80R	B1		
845	47	Grating for SICANC90	900	GSICAN90R	B1		
945	47	Grating for SICANC100	1000	GSICAN100R	B1		
345	50	Grating for SICANC40		GSICAN40C	B1		
645	50	Grating for SICANC70	700	GSICAN70C	B1		
745	50	Grating for SICANC80	800	GSICAN80C	B1		
845	50	Grating for SICANC90	900	GSICAN90C	B1		
945	50	Grating for SICANC100	1000	GSICAN100C	B1		
345	50	Grating for SICANC40		GSICAN40B	B1		
645	50	Grating for SICANC70	700	GSICAN70B	B1		
745	50	Grating for SICANC80	800	GSICAN80B	B1		
845	50	Grating for SICANC90	900	GSICAN90B	B1		
945	50	Grating for SICANC100	1000	GSICAN100B	B1		
345	50	Grating for SICANC40		GSICAN40F	B1		
645	50	Grating for SICANC70	700	GSICAN70F	B1		
745	50	Grating for SICANC80	800	GSICAN80F	B1		
845	50	Grating for SICANC90	900	GSICAN90F	B1		
945	50	Grating for SICANC100	1000	GSICAN100F	B1		
345	50	Grating for SICANC40		GSICAN40M	B1		
645	50	Grating for SICANC70	700	GSICAN70M	B1		
745	50	Grating for SICANC80	800	GSICAN80M	B1		
845	50	Grating for SICANC90	900	GSICAN90M	B1		
945	50	Grating for SICANC100	1000	GSICAN100M	B1		

FLOOR DRAINS AND SHOWER CHANNELS

Shower channels with 70 mm gratings **DOCIA** SYSTEMS

	LENGTH (mm)		WIDTH (mm)		Code NR	REF.	Packing	Packaging
	Body	Grating	Body	Mini shower				

CHANNEL BODIES WITHOUT GRATING AND FRAME

50 mm water seal - 0,65 l/s flow rate - With Ø 40/50 mm connectors (socket outlet or to screw)

Supplied without stainless steel grating and frame, with stainless steel body, studs to adjust height of frame, adjustment feet, TurboFlow drain with ball and socket, peripheral sealant membrane.

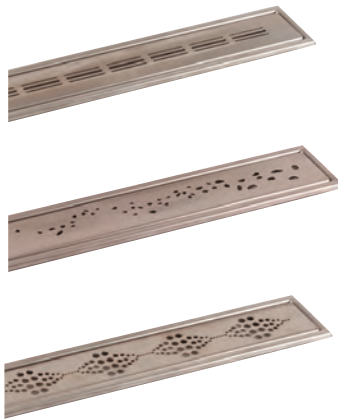


680	645	138	700	CS06S	0205515	B1	
780	745	138	800	CS07S	0205516	B1	
880	845	138	900	CS08S	0205517	B1	
980	945	138	1000	CS09S	0205518	B1	
1180	1145	138	1200	CS0X	0205519	B1	

Systems shower channels with 70 mm gratings **DOCIA** SYSTEMS

	LENGTH (mm)		WIDTH (mm)		COMPATIBILITY	WIDTH (mm) Mini shower	REFERENCE	Packing	Packaging
	Frame	Grating	Frame	Grating					

70 MM WIDE TYPE 304 STAINLESS STEEL GRATINGS AND FRAMES



670	650	100	70	Grating for CS06S - CP61/CP62	700	0245508	B1	
870	850	100	70	Grating for CS08S	900	0245509	B1	
1170	1150	100	70	Grating for CS0X - CPX1	1200	0245510	B1	
670	650	100	70	Grating for CS06S - CP61/CP62	700	0245500	B1	
870	850	100	70	Grating for CS08S	900	0245502	B1	
1170	1150	100	70	Grating for CS0X - CPX1	1200	0245504	B1	
670	650	100	70	Grating for CS06S - CP61/CP62	700	0245505	B1	
840	850	100	70	Grating for CS08S	900	0245506	B1	
1170	1150	100	70	Grating for CS0X - CPX1	1200	0245507	B1	

Systems shower channels with 70 mm gratings DOCIA SYSTEMS

	LENGTH (mm)	WIDTH (mm)	COMPTABILITY	WIDTH	Code NR	REF.	Packing	Packaging
				Mini shower				
70 MM WIDETYPE 304 STAINLESS STEEL GRATINGS AND FRAMES								
	645	70	Grating for CS06S - CP61/CP62	700	GFL46	0411662	B1	
	745	70	Grating for CS07S	800	GFL47	0411663	B1	
	845	70	Grating for CS08S	900	GFL48	0411664	B1	
	945	70	Grating for CS09S - CP91	1000	GFL49	0411665	B1	
	1145	70	Grating for CS0X - CPX1	1200	GFL4X	0411666	B1	
	645	70	Grating for CS06S - CP61/CP62	700	GFL06	0411676	B1	
	745	70	Grating for CS07S	800	GFL07	0411677	B1	
	845	70	Grating for CS08S	900	GFL08	0411678	B1	
	945	70	Grating for CS09S - CP91	1000	GFL09	0411679	B1	
	1145	70	Grating for CS0X - CPX1	1200	GFL0X	0411680	B1	
	645	70	Grating for CS06S - CP61/CP62	700	GFL56	0411652	B1	
	745	70	Grating for CS07S	800	GFL57	0411653	B1	
	845	70	Grating for CS08S	900	GFL58	0411654	B1	
	945	70	Grating for CS09S - CP91	1000	GFL59	0411655	B1	
	1145	70	Grating for CS0X - CPX1	1200	GFL5X	0411656	B1	
	645	70	Grating for CS06S - CP61/CP62	700	GFL66	0411657	B1	
	745	70	Grating for CS07S	800	GFL67	0411658	B1	
	845	70	Grating for CS08S	900	GFL68	0411659	B1	
	945	70	Grille pour CS09S - CP91	1000	GFL69	0411660	B1	
	1145	70	Grating for CS0X - CPX1	1200	GFL6X	0411661	B1	
	645	70	Grating for CS06S - CP61/CP62	700	GFL76	0411686	B1	
	745	70	Grating for CS07S	800	GFL77	0411687	B1	
	845	70	Grating for CS08S	900	GFL78	0411688	B1	
	945	70	Grating for CS09S - CP91	1000	GFL79	0411689	B1	
	1145	70	Grating for CS0X - CPX1	1200	GFL7X	0411690	B1	
	645	70	Grating for CS06S - CP61/CP62	700	GFLW6	0411698	B1	
	745	70	Grating for CS07S	800	GFLW7	0411699	B1	
	845	70	Grating for CS08S	900	GFLW8	0411700	B1	
	945	70	Grating for CS09S - CP91	1000	GFLW9	0411701	B1	
	1145	70	Grating for CS0X - CPX1	1200	GFLWX	0411702	B1	
	645	70	Grating for CS06S - CP61/CP62	700	GFL86	0411690	B1	
	745	70	Grating for CS07S	800	GFL87	0411691	B1	
	845	70	Grating for CS08S	900	GFL88	0411692	B1	
	945	70	Grating for CS09S - CP91	1000	GFL89	0411693	B1	
	1145	70	Grating for CS0X - CPX1	1200	GFL8X	0411694	B1	
	645	70	Grating for CS06S - CP61/CP62	700	GFL96	0411694	B1	
	745	70	Grating for CS07S	800	GFL97	0411695	B1	
	845	70	Grating for CS08S	900	GFL98	0411696	B1	
	945	70	Grating for CS09S - CP91	1000	GFL99	0411697	B1	
	1145	70	Grating for CS0X - CPX1	1200	GFL9X	0411698	B1	

SANITARY

SANITARY

GLUE

RAINGUTTERS

ROOFING ACCESSORIES

FASCIA AND ROOFING SOFFIT BOARDS

BUILDING

ACCES TRAP DOOR

VENTILATION

SURFACE DRAINAGE PRODUCTS

HYDRAULIC DRAINAGE CHANNELS

ENVIRONMENT

HYDRAULIC DRAINAGE CHANNELS

SAUL

DRAINAGE FITTINGS



FLOORLINE® SHOWER CHANNEL WIDTH 70 MM

FLOORLINE® SHOWER CHANNEL LENGTH 500 MM



TECHNICAL FEATURES

Materials:

- Stainless steel grating
- Stainless steel shower channel

Dimensions:

- Dimensions: 101 mm
- Width: 80 mm
- Length: 500 mm

Connection:

- Waste: \varnothing 40 mm screw or glue
- Sleeve: \varnothing 50 mm horizontal stick
- 90 ° Elbow: \varnothing 40/50 mm vertical stick
- Flow: 40 l /min at 20 mm water load

TOP ADVANTAGES

- Removable grating for an easy cleaning
- Stainless steel frame with adjustable stems
- Compact trap (height : 80 mm)
- 50 mm water seal

FLOORLINE® SHOWER CHANNEL LENGTH 800 MM



TECHNICAL FEATURES

Materials:

- Stainless steel grating
- Stainless steel shower channel

Dimensions:

- Dimensions: 101 mm
- Width: 80 mm
- Length: 800 mm

Connection:

- Waste: \varnothing 40 mm screw or glue
- Sleeve: \varnothing 50 mm horizontal stick
- 90 ° Elbow: \varnothing 40/50 mm vertical stick
- Flow: 40 l /min at 20 mm water load

TOP ADVANTAGES

- Removable grating for an easy cleaning
- Stainless steel frame with adjustable stems
- Compact trap (height : 80 mm)
- 50 mm water seal

FLOOR DRAINS AND SHOWER CHANNELS

Shower channel Floorline®

	LENGTH (mm)		WIDTH (mm)		CODE NR	REF.	Packing	Packaging
	Body	Frame	Body	Frame				

SHOWER CHANNELS WITH 500 MM SQUARE GRATING FLOORLINE®

50 mm water seal - 0,66 litres/second flow rate - Solvent weld Ø 40/50 mm socket outlet or to screw
 Supplied with body an sealing flange, 304 stainless steel square grating design, anchor brackets and adjustment, plate, sleeve Ø 40/50 reduction, elbow vertical connection Ø 40/50



500	496	80	76	CS50S	0205524	B1	

SHOWER CHANNELS WITH 800 MM SQUARE GRATING FLOORLINE®

50 mm water seal - 0,66 litres/second flow rate - Solvent weld Ø 40/50 mm socket outlet or to screw
 Supplied with body and sealing flange plate recovery, 304 stainless steel square grating design, anchor brackets and adjustment, plate, sleeve Ø 40/50 reduction, elbow vertical connection Ø 40/50



800	796	80	76	CS80S	0205525	B1	

50 mm water seal - 0,66 litres/second flow rate - Solvent weld Ø 40/50 mm socket outlet or to screw
 Supplied with Flange body sealing recovery, 304 stainless steel Lines grating design, anchor brackets and adjustment, plate, sleeve Ø 40/50 reduction, elbow vertical connection Ø 40/50



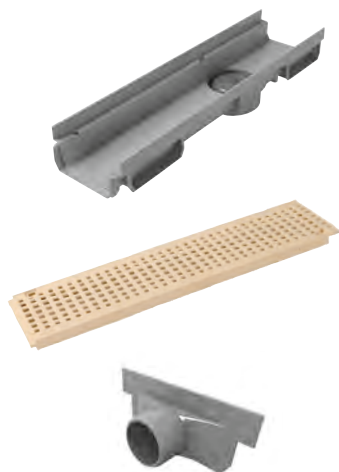
800	796	80	76	C80	0205546	B1	

Shallow channel

	DESCRIPTION	REF.	Packing	Packaging
--	-------------	------	---------	-----------

SHALLOW CHANNEL

28 mm water seal - Ø 93 mm sealable PVC body in a Ø 100 mm PVC tube



Channel lenght 0,5 m with trap with outlet 40 and 50	CABS773		6
Grating for shallow channels other gratings : see Hydraulic drainage channels	GR77PS		12
End or lateral outlet Ø 40	NAH773		10

SANITARY

SANITARY

GLUE

RAINGUTTERS

ROOFING ACCESSORIES

FASCIA AND ROOFING SOFFIT BOARDS

BUILDING

ACCES TRAP DOOR

VENTILATION

SURFACE DRAINAGE PRODUCTS

HYDRAULIC DRAINAGE CHANNELS

ENVIRONMENT

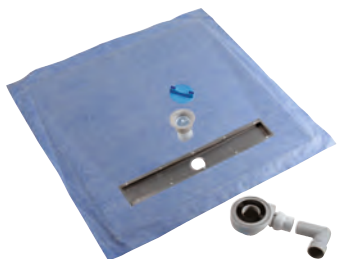
HYDRAULIC DRAINAGE CHANNELS

SAUL

FLOOR DRAINS AND SHOWER CHANNELS

Ready-to-tile EPS shower boards **DOCIA** SYSTEMS

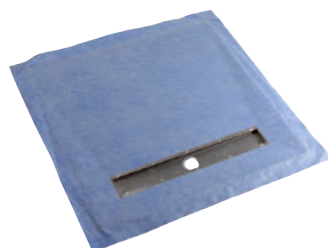
	DESCRIPTION	REF.	Packing	Packaging
SHOWER BOARDS + CHANNEL BODY SETS WITHOUT GRATING AND FRAME				



CP61

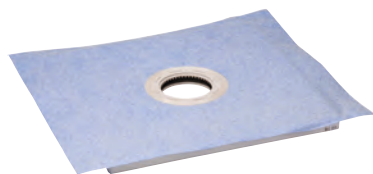
	DESCRIPTION	REF.	Packing	Packaging
Channel body + high density EPS board				
	CP61 , 90 x 90 x 5 cm for 650 mm stainless steel channel	0205520	C1	
	CP62 , 90 x 180 x 5 cm for 650 mm stainless steel channel	0205521	C1	
	CP91 , 120 x 120 x 5 cm for 950 mm stainless steel channel	0205522	C1	
	CPX1 , 150 x 150 x 5 cm for 1150 mm stainless steel channel	0205523	C1	

CHANNEL SHOWER BOARDS ALONE WITH SEALING MEMBRANE



	DESCRIPTION	REF.	Packing	Packaging
High density EPS board only for use with a Nicoll Turbosol trap				
	90 x 90 x 5 cm board for 650 mm stainless steel channel	9871406	C1	
	90 x 180 x 5 cm board for 650 mm stainless steel channel	9871407	C1	
	120 x 120 x 5 cm board for 950 mm stainless steel channel	9871408	C1	
	150 x 150 x 5 cm board for 1150 mm stainless steel channel	9871409	C1	

CHANNEL SHOWER BOARDS ALONE WITH SEALING MEMBRANE



	DESCRIPTION	REF.	Packing	Packaging
High density EPS board only for use with a Nicoll Turbosol trap				
	90 x 90 x 4 cm board	9871400	C1	
	100 x 100 x 4,2 cm board	9871401	C1	
	120 x 120 x 4,5 cm board	9871402	C1	
	90 x 120 x 4,5 cm board	9871410	C1	
	150 x 120 x 5 cm board	9871403	C1	
	180 x 90 x 4,2 cm board	9871404	C1	
	150 x 150 x 5 cm board	9871405	C1	

Ready-to-tile shower boards DOCIA[®] SYSTEMS

Turbosol DESCRIPTION REF. Packing Packaging

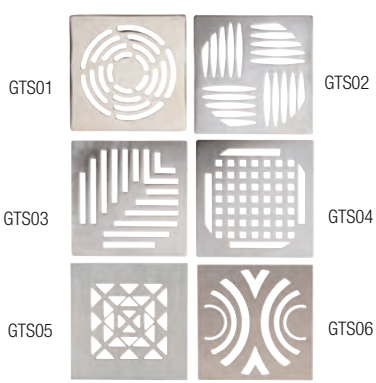
TURBOSOL TRAPS FOR READY-TO-TILE SHOWER BOARD



DESCRIPTION	REF.	Packing	Packaging
Only for use with Nicoll EPS shower board			
Horizontal outlet drain	9886398	B1	
Vertical outlet	9887635	B1	
Horizontal outlet for channel shower board	9887249	B1	

Turbosol DESCRIPTION CODE NR REF. Packing Packaging

GRATINGS FOR TURBOSOL BOARDS AND FILM

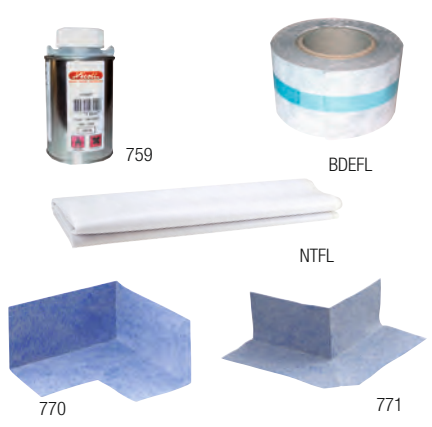


DESCRIPTION	CODE NR	REF.	Packing	Packaging
Gratings for TURBOSOL drains				
100 x 100 designer gratings, 3 mm thick stainless steel (Grating 0411572: standard grating supplied with Turbosol board and Turbosol water-tight film)	GTS01	0411572	K1	
	GTS02	0411573	K1	
	GTS03	0411574	K1	
	GTS04	0411575	K1	
	GTS05	0411576	K1	
	GTS06	0411577	K1	
150 x 150 designer grating with grating bracket, suitable for Turbosol water-tight film, 3 mm thick stainless steel	GTS11	0411623	B1	



DESCRIPTION REF. Packing Packaging

SEALING - ACCESSORIES



DESCRIPTION	REF.	Packing	Packaging
Drain accessories with EPS BOARDS			
BDEFL, self-adhesive corner sealant tape, 10 m x 8 cm roll with split release liner, ready-to-tile	0411681	B1	
759, adhesive for installation of drains with water-tight film	0411537	B1	
NTFL, 1,5 x 1,8 m non-woven sealing membrane, water-repellent, ready-to-tile	0411703	S1	
Moulded ready-to-bond corner seals			
770, internal corner	0411587	S1	
771, external corner	0411588	S1	



READY-TO-TILE PP ALVEOLAR SHOWER BOARDS

WITH FLOOR DRAINS



The alveolar structure of this shower board is exceptionally resistant to compression and is particularly suited to small mosaic tiles even when subject to wheelchair traffic.

- Resistant to compression: 1,3 N/mm²
- Floor drains with Ø 50 mm horizontal or Ø 50/63 mm vertical outlet
- The alveolar structure makes it light but resistant, particularly suited to small mosaic tiles
- Sealant-coated surface for direct application of tile adhesive
- 15 x 15 cm brushed type 304 stainless steel, White PVC or type 316 stainless steel grating
- Type 304 stainless steel, white PVC or Type 316 stainless steel frame



- Solvent welding connection
- Optional lockable grating
- Flow rates: Ø 50 mm = 1,2 l/s in vertical outlet
- Flow rates: Ø 50 mm = 0,8 l/s in horizontal outlet

Dimensions

90 x 90 x 4 cm

120 x 90 x 4,2 cm

120 x 120 x 4,5 cm

Gratings	Load class
15 x 15 cm stainless steel	K 3
15 x 15 cm PVC	K 3



FLOOR DRAINS AND SHOWER CHANNELS

Ready-to-tile shower boards **DOCIA** SYSTEMS

	DESCRIPTION	REF.	Packing	Packaging
--	-------------	------	---------	-----------

SHOWER BOARDS WITH 15 X 15 CM FLOOR DRAIN GRATING

**Shower boards: light, strong alveolar structure - direct application of tile adhesive.
Floor drains: 50 mm water seal - PVC body - 304 stainless steel grating and frame - height adjustable.**



Horizontal outlet



Vertical outlet

90 x 90 cm shower board with 15 x 15 cm floor drain grating				
Ø 50 mm horizontal outlet - 0,8 l/s flow rate	RAC99IH	C1		
Ø 50/63 mm vertical outlet - 1,2 l/s flow rate	RAC99IV	C1		
120 x 90 cm shower board with 15 x 15 cm floor drain grating				
Ø 50 mm horizontal outlet - 0,8 l/s flow rate	RAC129IH	C1		
Ø 50/63 mm vertical outlet - 1,2 l/s flow rate	RAC129IV	C1		
120 x 120 cm shower board with 15 x 15 cm floor drain grating				
Ø 50 mm horizontal outlet - 0,8 l/s flow rate	RAC1212IH	C1		
Ø 50/63 mm vertical outlet - 1,2 l/s flow rate	RAC1212IV	C1		

SHOWER BOARDS



RAC99

Only for use with Nicoll SRAC type floor drains				
90 x 90 cm shower board	RAC99	B1		
120 x 90 cm shower board	RAC129			
120 x 120 cm shower board	RAC1212	B1		

FLOOR DRAINS FOR READY-TO-TILE SHOWER TRAYS



SRAC15IH

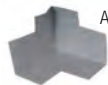
Only for use with Nicoll RAC type ready-to-tile shower board				
Ø 50 mm, horizontal outlet 0,8 l/s flow rate (15 x 15 cm grating)	Type 304 stainless steel grating	SRAC15IH	C1	
	Type 316 stainless steel grating	SRAC15I316H	C1	
Ø 50/63 mm, vertical outlet 1,2 l/s flow rate (15 x 15 cm grating)	Type 304 stainless steel grating	SRAC15IV	C1	
	Type 316 stainless steel grating	SRAC15I316V	C1	

SEALING ACCESSORIES

BANRAC



ANGRAC



BANBUTYL



Flexible sealant tape				
4 moulded corner seals supplied in units of 4	ANGRAC	S1		
Sealant tape 10 ml x 0,10 ml roll	BANRAC	S1		
Self-adhesive butyl sealant tape	BANBUTYL	F1		



FLOOR DRAINS FOR TILED FLOORINGS

COMFORT TAKES PRIDE OF PLACE IN YOUR SHOWER ROOM...

The SICA floor drain is the ideal product for walk-in shower installations: for INDIVIDUAL SHOWERS/HOTELS/SPAS/COMMUNAL SHOWERS.














- Floor drains specifically designed for installation on tiled floors
- NF-Me reaction to fire classification for the PVC floor drains
- Guaranteed seal thanks to its flange + moulded sealing membrane system for easy installation
- Multipurpose floor drains (Ø 50 mm horizontal or Ø 50/63 mm vertical drain outlets)
- PVC, and 304 stainless steel or Type 316 stainless steel grating available in 10 x 10 cm and 15 x 15 cm sizes (optional lockable grating)
- Quick, safe installation
- Easy to clean
- Flow rates: Ø 50 mm = 1,20 l/s in vertical outlet 15x15 cm gratings
- Flow rates: Ø 50 mm = 1,10 l/s in vertical outlet 10x10 cm gratings
- Flow rates: Ø 50 mm = 0,8 l/s in horizontal outlet.

Gratings	Load class
10 x 10 cm stainless steel	H 1,5
15 x 15 cm stainless steel	K 3
10 x 10 cm PVC	K 3
15 x 15 cm PVC	K 3

FLOOR DRAINS AND SHOWER CHANNELS

Floor drains for tiled flooring **DOCIA** SYSTEMS

	DESCRIPTION	REF.	Packing	Packaging
FLOOR DRAINS FOR TILED FLOORING WITH 304 STAINLESS STEEL GRATINGS				
50 mm water seal - PVC body - stainless steel frame - height adjustable				
Floor drains for tiled floorings with stainless steel grating Ø 50 mm HORIZONTAL OUTLET				
	Floor drain with 10 x 10 cm stainless steel grating - flow rate 0,8 l/s	SICA10IH	B1	
	Floor drain with lockable 10 x 10 cm stainless steel grating	SICA10VH	B1	
	Floor drain with 15 x 15 cm stainless steel grating - flow rate 0,8 l/s	SICA15IH	B1	
	Floor drain with lockable 15 x 15 cm stainless steel grating	SICA15VH	B1	
Floor drains for tiled floorings with stainless steel grating Ø 50/63 mm VERTICAL OUTLET				
	Floor drain with 10 x 10 cm stainless steel grating - flow rate 1,1 l/s	SICA10IV	B1	
	Floor drain with lockable 10 x 10 cm stainless steel grating	SICA10VV	B1	
	Floor drain with 15 x 15 cm stainless steel grating - flow rate 1,2 l/s	SICA15IV	B1	
	Floor drain with lockable 15 x 15 cm stainless steel grating	SICA15VV	B1	
FLOOR DRAINS FOR TILED FLOORING WHITE PVC GRATING 				
50 mm water seal - PVC body - adjustable height				
Floor drains for tiled flooring with white PVC grating Ø 50 mm HORIZONTAL OUTLET				
	Floor drain with 10 x 10 cm PVC grating - flow rate 0,8 l/s	SICA10H	B1	
	Floor drain with 15 x 15 cm PVC grating - flow rate 0,8 l/s	SICA15H	B1	
	Floor drain with 15 x 15 cm PVC grating and 20 x 20 cm plate flow rate 0,8 l/s	SICA215H	B1	
	Floor drains for tiled flooring with white PVC grating Ø 50/63 mm VERTICAL OUTLET			
	Floor drain with 10 x 10 cm PVC grating - flow rate 1,1 l/s	SICA10V	B1	
	Floor drain with 15 x 15 cm PVC grating - flow rate 1,2 l/s	SICA15V	B1	
	Floor drain with 15 x 15 cm PVC grating and 20 x 20 cm plate flow rate 1,2 l/s	SICA215V	B1	
	FLOOR DRAINS FOR TILED FLOORS TYPE 316 STAINLESS STEEL GRATING			
50 mm water seal - PVC body - type 316 stainless steel frame - adjustable height				
Floor drains for tiled floors with type 316 stainless steel grating Ø 50 mm HORIZONTAL OUTLET				
	Floor drain with 10 x 10 cm type 316 stainless steel grating flow rate 0,8 l/s	SICA10I316H	B1	
	Floor drain with 15 x 15 cm type 316 stainless steel grating flow rate 0,8 l/s	SICA15I316H	B1	
Floor drains for tiled floors with type 316 stainless steel grating Ø 50/63 mm VERTICAL OUTLET				
	Floor drain with 10 x 10 cm type 316 stainless steel grating flow rate 1,1 l/s	SICA10I316V	B1	
	Floor drain with 15 x 15 cm type 316 stainless steel grating flow rate 1,2 l/s	SICA15I316V	B1	

SANITARY

SANITARY

GLUE

RAINGUTTERS

ROOFING ACCESSORIES

FASCIA AND ROOFING SOFFIT BOARDS

BUILDING

ACCES TRAP DOOR

VENTILATION

SURFACE DRAINAGE PRODUCTS

HYDRAULIC DRAINAGE CHANNELS

ENVIRONMENT

HYDRAULIC DRAINAGE CHANNELS

SAUL

FLOOR DRAINS AND SHOWER CHANNELS

Shower corner drains

	REF.	Packing	Packaging
CORNER SHOWER TRAP BODY WITHOUT GRATING			

50 mm trap seal - 0.66 litres/second flow rate - Solvent weld Ø 40 mm socket outlet or to screw.

Supplied without stainless steel grating, with flange, screws, studs to adjust height of frame and grating, wall fastening plate, trap and 304 stainless steel frame.

New !



SITRIANC

SITRIANC

B1

GRATINGS FOR TYPE 304 STAINLESS STEEL CORNER DRAINS

The stainless steel frame surrounding the grating is supplied with the trap body.
Grating compatible with SITRIANC



New !

GSITRIANR

B1


GSITRIAND

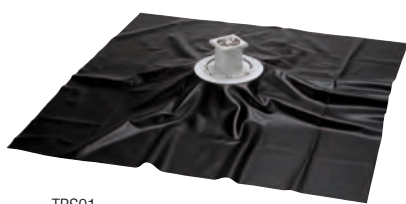
B1

GSITRIANS

B1




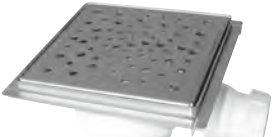
PVC waterproofing membrane DOCIA[®] SYSTEMS

	DESCRIPTION	Ø	REF.	Packing	Packaging
WATERPROOFING MEMBRANE + FLOOR DRAINS					
 Turbosol MEMBRANE	Floor drains with waterproofing membrane				
	TBS01 , with 120 x 120 cm waterproofing membrane	40	0205391	B1	
	TBS02 , with 150 x 180 cm waterproofing membrane	40	0205392	B1	
	TBS03 , with 180 x 210 cm waterproofing membrane	40	0205393	B1	
	TBSF , 180 x 120 cm waterproofing membrane without cut-out	40	0411616	B1	
	TBS98 , made-to-measure waterproofing membrane	40	0205468		
	TBS18 , with waterproofing membrane 120 x 120 cm and without head	50	0205485	B1	
	TBS03K , with waterproofing membrane 180 x 210 cm and without head	40-50	0205427	B1	
TBS02K , with waterproofing membrane 150 x 180 cm and without head	40-50	0205426	B1		



TBS01

Floorline[®] drains

	DESCRIPTION	REF.	Packing	Packaging
FLOORLINE[®] DRAINS				
   	ABS Floor drains 10 x 10 cm without grating - 0,65 l/s flowrate - Ø 40 outlet	0205550	B1	
	C10BG , 10 x 10 cm grating in stainless steel bubble pattern	0205551		
	C10SG , 10 x 10 cm grating in stainless steel small square pattern	0205552		
	ABS Floor drains 15 x 15 cm stainless grating - 0,65 l/s flowrate - Ø 40 outlet	0205549	B1	

SANITARY

SANITARY

GLUE

RAINGUTTERS

ROOFING ACCESSORIES

FASCIA AND ROOFING SOFFIT BOARDS

BUILDING

ACCES TRAP DOOR

VENTILATION

SURFACE DRAINAGE PRODUCTS

HYDRAULIC DRAINAGE CHANNELS












ENVIRONMENT

HYDRAULIC DRAINAGE CHANNELS

SAUL

FLOOR DRAINS AND SHOWER CHANNELS

Floor drains for vinyl floors **DOCIA** SYSTEMS

	DESCRIPTION	REF.	Packing	Packaging
FLOOR DRAINS FOR VINYL FLOORS WHITE PVC GRATING 				
50 mm water seal - PVC body				
 <p>SITAR</p>  <p>SITARV</p>  <p>SITARH</p>	Floor drain for vinyl floors with white PVC adjustable height grating			
	Ø 50/63 mm VERTICAL outlet - flow rate 1,3 l/s Ø 50 mm HORIZONTAL outlet - flow rate 1,1 l/s	SITAR	B1	D-6
	Floor drain for vinyl floors with white PVC grating			
	Ø 50/63 mm VERTICAL outlet - flow rate 1,3 l/s in 50 mm version - 1,4 l/s in 63 mm version	SITARV	B1	
	Floor drain for vinyl floors with white PVC grating			
	Ø 50 mm HORIZONTAL outlet - flow rate 0,8 l/s	SITARH	B1	
Floor drains FOR VINYL FLOORS ALUMINIUM GRATING 				
 <p>SITARAL</p>  <p>SITARALV</p>  <p>SITARALH</p>  <p>ESITARAL</p>	Floor drain for vinyl floors with aluminium adjustable height grating			
	Ø 50/63 mm VERTICAL outlet - flow rate 1,2 l/s Ø 50 mm HORIZONTAL outlet - flow rate 0,9 l/s	SITARAL	B1	D-6
	Floor drain for vinyl floors with aluminium grating			
	Ø 50/63 mm VERTICAL outlet - flow rate 1,3 l/s in 50 mm version - 1,4 l/s in 63 mm version	SITARALV	B1	
	Floor drain for vinyl floors with aluminium grating			
	Ø 50 mm HORIZONTAL outlet - flow rate 0,8 l/s	SITARALH	B1	
	Aluminium grating + flange kit (supplied with 7 screws)	ESITARAL	S1	
ACCESSORIES 				
	M/F Ø 125 extension piece	ZXSIT		

Floor drains

10 X 10 CM SQUARE GRATING FLOOR GULLIES



DESCRIPTION	Ø	REF.	Packing	Packaging
28 mm water seal - Ø 93 mm PVC body that can be sealed into Ø 100 mm PVC tube Suitable for use in walk-in showers, without seal				
Ø 40/50 mm vertical outlet				
Floor trap with 10 x 10 cm stainless steel grating and frame		SIHJ10CI		D-10
Floor trap with 10 x 10 cm stainless steel grating		SIHJ10I		D-10
Floor trap with 10 x 10 cm white PVC grating		SIHJ10		D-10
Floor trap with 10 x 10 cm PVC grating and frame, Ø 50 to glue or to screw	50	SIJ10IV		
Horizontal outlet adaptor		ADSIHJ	C-10	D-10
Floor trap with 10 x 10 cm stainless steel grid + adaptor		SIHJ10IH	C-10	D-10

FLOOR DRAINS WITH ROUND GRATING AND PLATE



DESCRIPTION	Ø	REF.	Packing	Packaging
Horizontal outlet - direction-adjustable plate				
Floor drain	32	SICF	C-10	
Floor drain	40	SICH	C-10	
floor drain with horizontal outlet	50	SICI		
100 x 100 plate		PLC10FH	S10	
Vertical outlet				
Floor drain	32	SIF	S1	D-10
Floor drain	40	SIH	S1	D-10
Floor drain	50	SIJ	S1	D-10
Plates for floor drain:				
Ø 32 and 40 mm - dimensions 100 x 100		PL10FH	S10	
Ø 32 and 40 mm - dimensions 150 x 150		PL15FH	S10	
Ø 50 mm - dimensions 150 x 150		PL15J	S10	
Ø 50 mm - dimensions 200 x 200		PL20J	S10	
Ø 50 mm - dimensions 250 x 250		PL25J	S10	

FLOOR GULLIES WITH MULTIPLE INLETS



DESCRIPTION	Ø	REF.	Packing	Packaging
Multiple inlets Ø 50/50/60/63 mm direction-adjustable plate				
Plate dimensions 150 x 150		SEM15		D-4
Plate dimensions 200 x 200		SEM20		D-4
From Ø 100 mm tubes with multiple inlets Ø 40/40/40/40-50 mm				
Low model		P4VST		
Tall model		P4VAST		
Ø 100 mm removable plug Suitable for TPR valve drains		TAPUSO	F20	

FLOOR DRAINS AND SHOWER CHANNELS

Floor drains

	DESCRIPTION	Ø	REF.	Packing	Packaging
--	-------------	---	------	---------	-----------

BODY OF FLOOR GULLY WITH MULTIPLE INLETS



KFSEMX

Body 125 mm with 50 x 50 x 50 mm inlets and 63 mm outlet, 35 mm water seal	125	KSEMVX			
Body 125 mm with 40 x 40 x 40 mm inlets and 50 mm outlet, 30 mm water seal	125	KSEMVG			
Body 110 mm with 50 x 50 x 50 mm inlets and 50 mm outlet, 35 mm water seal	110	KSEMV			

ACCESSORIES FOR THE ABOVE FLOOR GULLIES



PGSMX20

Covers, light grey colour					
Plate 15 x 15 cm with PVC grating		PGSMX15	S1		
Plate 20 x 20 cm with PVC grating		PGSMX20	S1		
Plate 15 x 15 cm with PVC cover		PTSMX15	S1		
Plate 20 x 20 cm with PVC cover		PTSMX20	S1		
Plate 15 x 15 cm with stainless steel grating and cover		PISMX15	S1		
Plate 20 x 20 cm with stainless steel grating and cover		PISMX20	S1		



PTSMX201

Covers, ivory colour					
Plate 15 x 15 cm with PVC grating		PGSMX151	S1		
Plate 20 x 20 cm with PVC grating		PGSMX201	S1		
Plate 15 x 15 cm with PVC cover		PTSMX151	S1		
Plate 20 x 20 cm with PVC cover		PTSMX201	S1		
Plate 15 x 15 cm with stainless steel grating and cover		PISMX151	S1		
Plate 20 x 20 cm with stainless steel grating and cover		PISMX201	S1		



PTSMX20B

Covers, white colour					
Plate 15 x 15 cm with PVC grating		PGSMX15B	S1		
Plate 20 x 20 cm with PVC grating		PGSMX20B	S1		
Plate 15 x 15 cm with PVC cover		PTSMX15B	S1		
Plate 20 x 20 cm with PVC cover		PTSMX20B	S1		
Plate 15 x 15 cm with stainless steel grating and cover		PISMX15B	S1		
Plate 20 x 20 cm with stainless steel grating and cover		PISMX20B	S1		

ACCESSORIES



M/F Ø 125 extension piece

ZXSIT